

SparkLight ADM-16

NG SDH multi-service
STM-1/4/16 cross-
connect & multiplexer

Applications:

- Backbone networks,
- Backhaul network for wireless and wire-line operators,
- Access networks for Enterprises
- Multi-service network for energy, traffic, utilities operators

Benefits:

- Provides revenue-generating next generation Ethernet services while preserving investments in legacy SDH networks.
- Optimized bandwidth utilization for Ethernet services using GFP, VCAT, LCAS functionality.
- Effective management integration using Java Web Start GUI and SNMP protocol transported by an embedded IP/OSPF telemanagement network.
- Compact solutions improves place and energy efficiency that can help lower operating expenses
- Easy migration from TDM to IP.
- Low OPEX/CAPEX.

Features:

- 2 and 5 slot »high Availability« shelf with power supply redundancy
- Non blocking 17.5G@VC-4 and 3.7G@VC-12 cross-connect

SparkLight ADM-16 a compact, high-density STM-1/4 next-generation access multiplexer, that helps to support high-speed communications services. Providing a wide variety of interfaces, on one common platform, allows the service provider to build effective, flexible, user-friendly communications network.

Extremely powerful EoS tools enable a smooth migration from TDM to packet services. Using VCAT to provide flexible bandwidth assignment from 2Mbps to 1000Mbps, and LCAS for reliable bandwidth efficient transport of many different packet services.



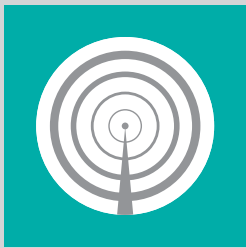
SDH Line Features:

- Up to 4 STM1/6/4 SFP based optical interfaces
- Up to 4 STM4/1 SFP based optical (in case of STM1 also electrical) interfaces
- Supported many different SDH protection mechanisms
- Packet Features:
 - Up to 8 10/100 Eth interfaces
 - Up to 2 Gbit Eth interfaces
 - GFP-F Mapping (Optional GFP-T for Gbit Ethernet)
 - VCAT and LCAS protocol support
 - Enhanced L2 Aggregation support
- Up to 252 E1 interfaces in 5 slot chassis (max 64 E1 interfaces on special multiport E1 blade)
- Java Web Start and SNMP based integrated management

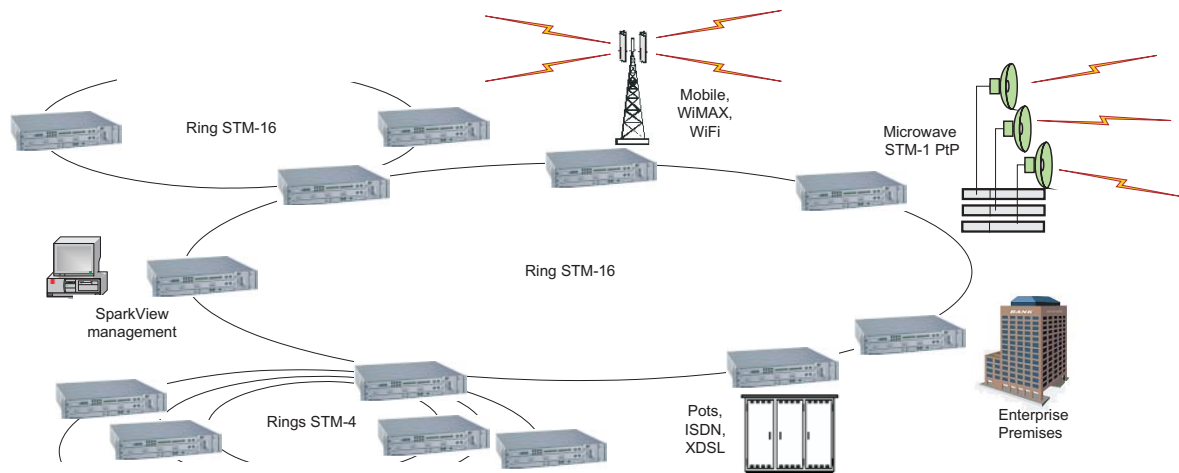
SPARKLIGHT

optical transmission system





SparkLight ADM-16



Technical data

Architecture	Shelves	2 slots, 5 slots
	Central Blade	STM-16 blade
	Tributary Blades	32xE1 blade, 31xE1 RTM blade, 3xE3 RTM blade
	NE Types	STM-16 terminal, ADM-16, CC-4xSTM-16/4+4xSTM-4/1
	HW Redundancy	Central Blade, Tributary Blades, Management Module, Power Module
Aggregate Interfaces	STM-16/4	4 interfaces on STM-16 blade
	STM-4/1	4 interfaces on STM-16 blade
	Compatibility	SFF-8472, SFF-8074i, MSA Digital Diagnostics Monitor compliant
	Suitable SFP modules	SFP Transceiver MSA Spec. Optical STM-1/4/16 up to 120 km, ITU-T G.957, Electrical STM-1
Tributary interfaces	E1	Up to 252xE1 ports (63xE1 per slot), G.703 point 6., 2,048 kbit/s 120/75 Ω - SW defined
	E3	3xE3 ports (RTM blade) G.703 point 8., 34,386 kbit/s
	Ethernet interfaces	2x1000 Base-SX/LX/CX SFP module (optional electrical RJ45 SFP) 8x10/100 Base T, RJ45
SDH Features	Crossconnect	Capacity: 17,5 Gb/s HO, 3,7 Gb/s LO Connectivity: VC-12, VC-3, VC-4, VC-4-Xc (X=1...16)
	EoS	ITU-T G.7041, GFP (Generic Framing Procedure) Optional GFP-T for Gigabit Ethernet ITU-T G.707/Y.1322 in G.783, VCAT (Virtual Concatenation) ITU-T G.7042/Y.1305 LCAS (Link Capacity Adjustment Scheme) Up to 32 VCG (Virtual Concatenated Groups)
	Ethernet Aggregation	VLAN stacking (Q-in-Q) Classifying function based on port ID, VLAN tag or priority bits in MPLS Policing function based on MEF5 technical specifications Up to 256 service queues
	Protection	UPSR/SNCP, MS APS, BLSR/MS-SPRING
	Synchronization	Standard: ITU-T G.813, Sources: T1, T2, T3, E1 (framed/unframed) Outputs: T4, E1 (framed/unframed)
Management	Protocols	SNMP, CLI, Telnet
	Interfaces	10/100 Base T, RS-232, USB
	Functions	Fault, Performances, Configuration, Access management
Environmental conditions	Operation climatic	-5 +45°C/8-100% ETSI EN 300 019 class 3.1E
	Storage/transport	ETSI EN 300 019 class 1.1/class 2.3
	EMC compatibility	ETSI 301 489-4
Power	Power Supply	Redundant -38 V to -72 V (optional AC 230 V)
	Power consumption	<60 W/blade
Mechanical	Dimensions (HxWxD)	88x448x430 mm - 2 slots, 176x448x430 mm - 5 slots
	Weight	<12 kg - 2 slots, <18 kg - 5 slots